



Severn Sound Environmental Association

489 Finlayson St, PO Box 460, Port McNicoll Ontario L0K 1R0

Tel: 705-534-7283 Web-site: www.severnsound.ca Twitter: [@SSEA_SSRAP](https://twitter.com/SSEA_SSRAP)

Instagram: [severnsoundea](https://www.instagram.com/severnsoundea) YouTube: [Severn Sound Environmental Association](https://www.youtube.com/SevernSoundEnvironmentalAssociation)

2022 Crop Heat Units and Rainfall Data Summary for Lafontaine and Midland Weather Stations

November 22, 2022

Crop Heat Units (CHU) are a method to quantify the effect of temperature on crop development. The 2022 results for Crop Heat Units and rainfall were processed by the Severn Sound Environmental Association (SSEA) using data compiled from the weather stations located in the Township of Tiny, Lafontaine and the Water and Wastewater Operations Facility in Midland, Ontario. Using daily maximum and minimum temperatures, CHU accumulation was calculated by following Ontario's Ministry of Agriculture, Food and Rural Affairs, Agronomy Guide for Field Crops.

The 2022 CHU results for the Lafontaine station showed an increase compared with 2021, from May through to November. Overall, the 2022 accumulated CHUs ended higher by 384 units. The CHU count for the 2022 growing season, totalled 3480. Based on the data, the first killing frost in 2022 occurred on November 13, three days earlier than last years timing.

The 2022 accumulated CHU results for the Midland station are 3743 CHUs with the first killing frost occurring on November 13, nine days earlier then last years timing. Based on the data, the crop heat units had an accumulated increase from last year of 607 units.

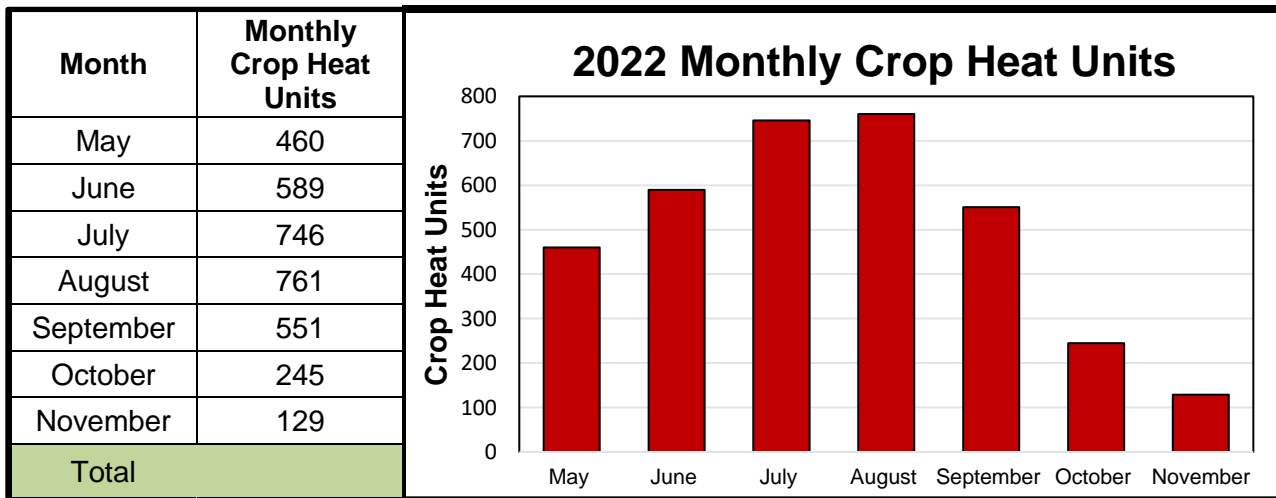
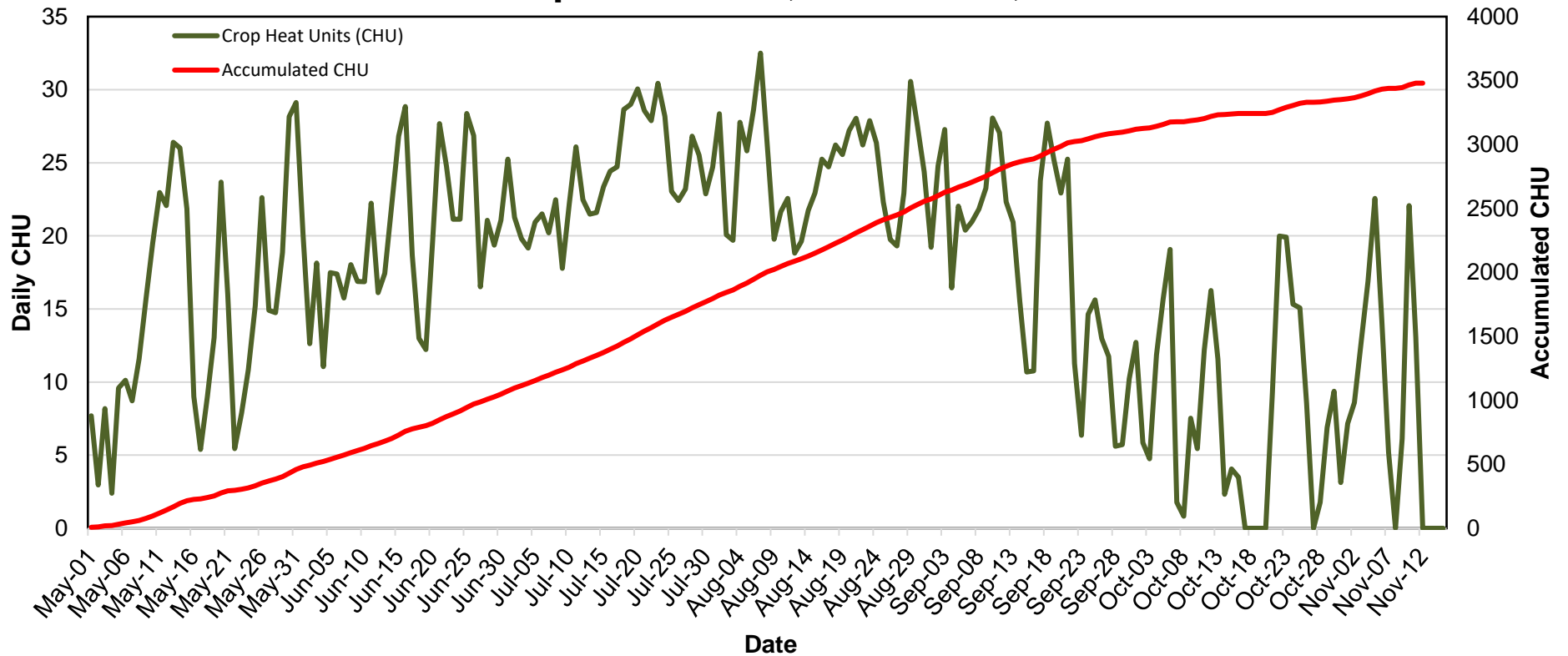
Both weather station locations recorded similar rainfall results for 2022. From May to the end of October the data shows relatively small amounts of rainfall occurring more frequently at both stations. Notable rain events with more significant amounts occurred on May 26th and August 3rd 2022 with amounts above 40mm in 24 hours occurring at the Lafontaine station. Throughout the spring and summer months weather appeared more localized with slightly higher rainfall amounts being recorded at the Lafontaine station. Over the ice free season, 2022, saw a decrease in total rainfall compared to 2021.

Graphs showing rainfall amounts are now updated monthly from May to October and can be viewed through severnsound.ca at [Monitoring/Weather Stations](#).

For more information:

Contact: Nikki Priestman, Watershed Health Coordinator,
Severn Sound Environmental Association,
705-534-7283 ext. 212 monitoring@severnsound.ca

2022 Crop Heat Units, Lafontaine, Ontario

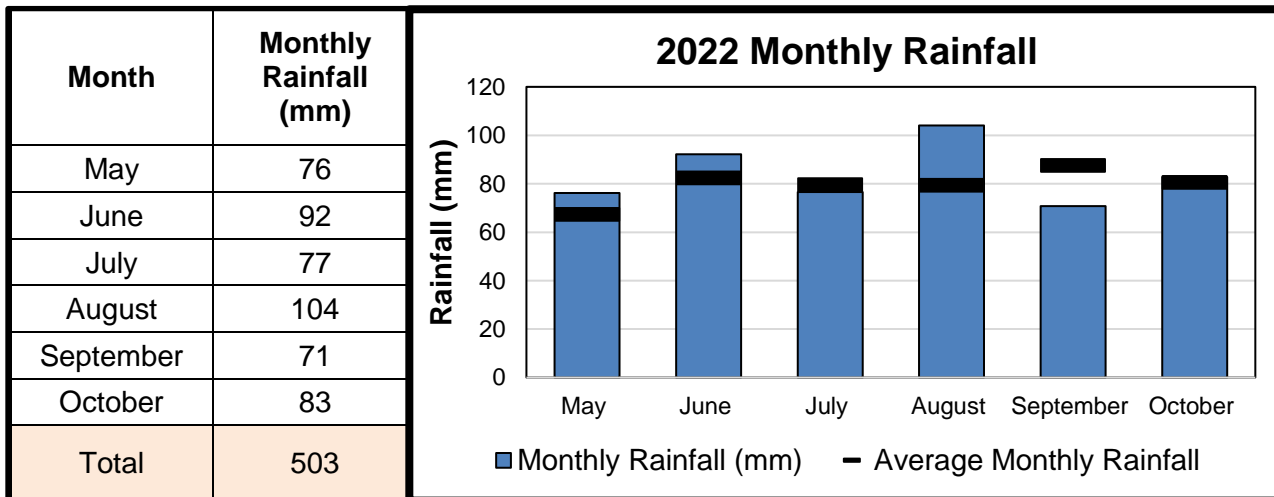
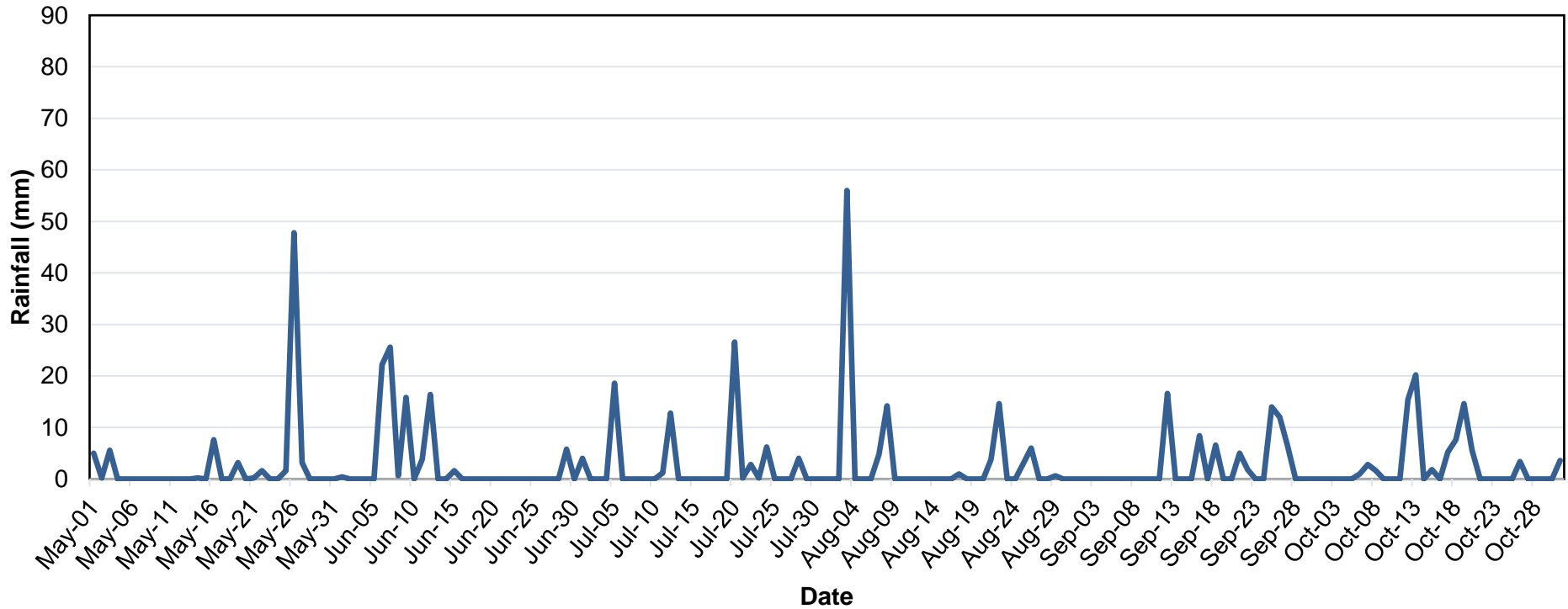


Crop Heat Unit calculations were based on Daily Max. and Min. Air Temperatures collected in Lafontaine, at the Municipally owned property, using an ADCON weather station. Data from May 1 to November 13, 2022 (first occurrence of -2°C or lower) was used to compile the results. The calculation method can be found at: <http://www.omafra.gov.on.ca/english/crops/pub811/pub811ch10.pdf> (Page 254)

For more information about the Severn Sound Environmental Association visit www.severnsound.ca



2022 Daily Rainfall, Lafontaine, Ontario

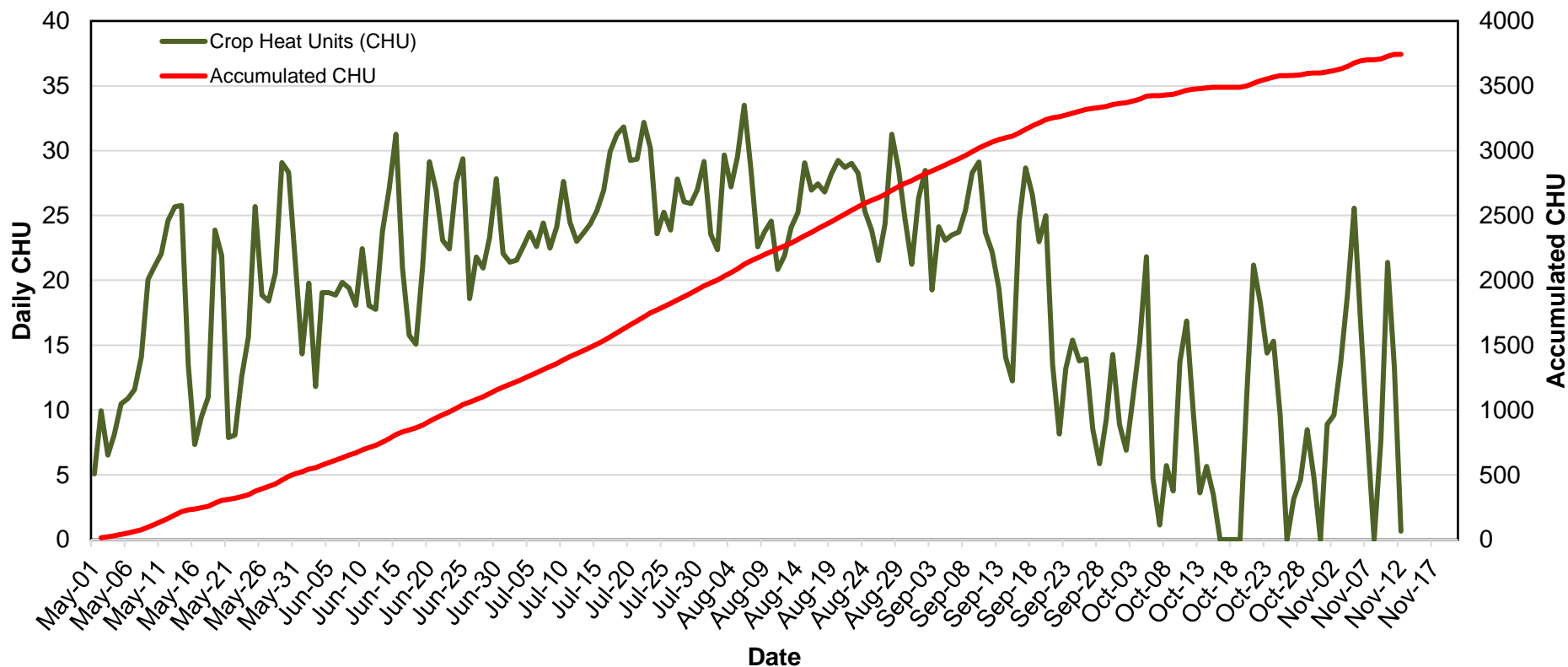


Rainfall amounts were based on continuous measurements recorded at the Lafontaine Ontario, Municipally, owned property, using a weather station equipped with a tipping bucket rain gauge. Data from May 1 to October 31, 2022 was used to compile the results.

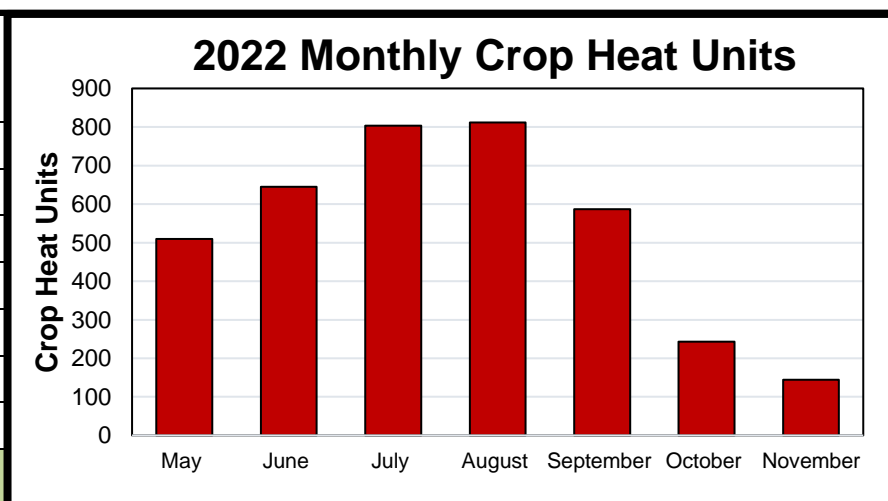
For more information about the Severn Sound Environmental Association visit www.severnsound.ca



2022 Crop Heat Units, Midland, Ontario



Month	Monthly Crop Heat Units
May	509
June	644
July	803
August	812
September	587
October	243
November	144
Total	3743

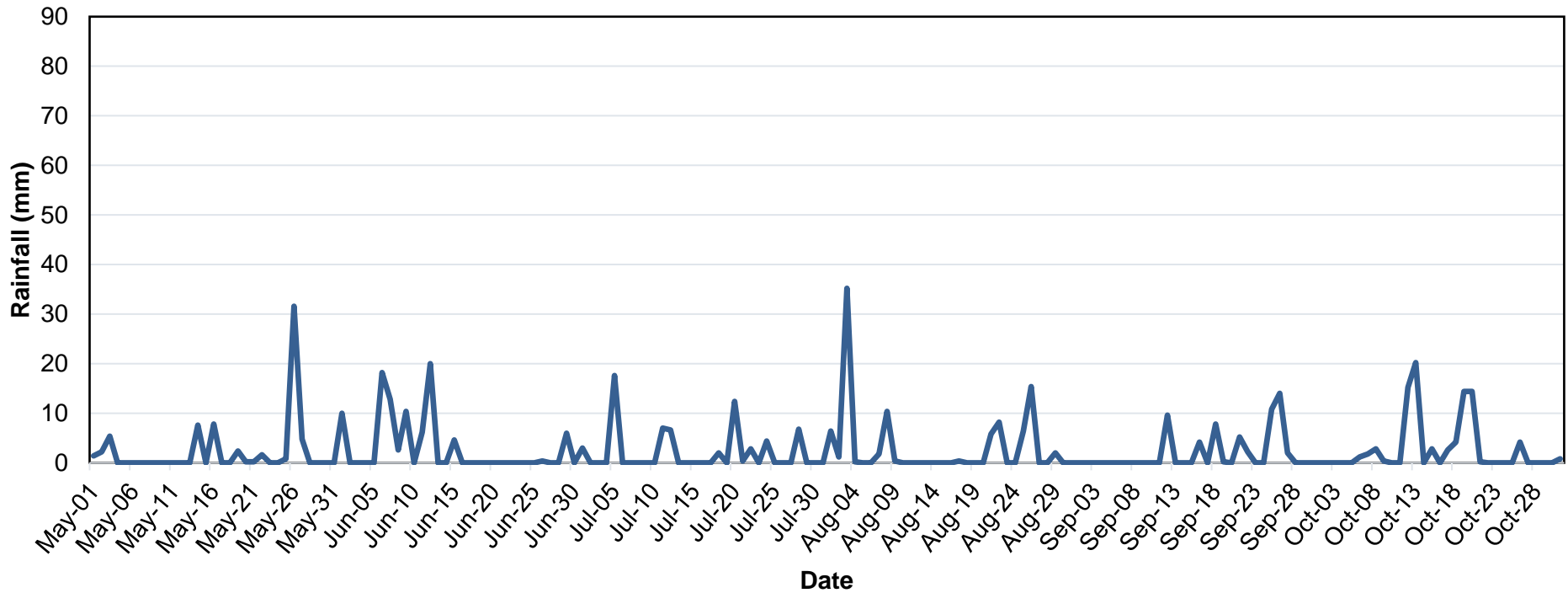


Crop Heat Unit calculations were based on Daily Max. and Min. Air Temperatures collected in Midland, at the Water and Wastewater Operations Facility, using an ADCON weather station. Data from May 1 to November 13, 2022 (first occurrence of -2°C or lower) was used to compile the results. The calculation method can be found at: <http://www.omafra.gov.on.ca/english/crops/pub811/pub811ch10.pdf> (Page 254)

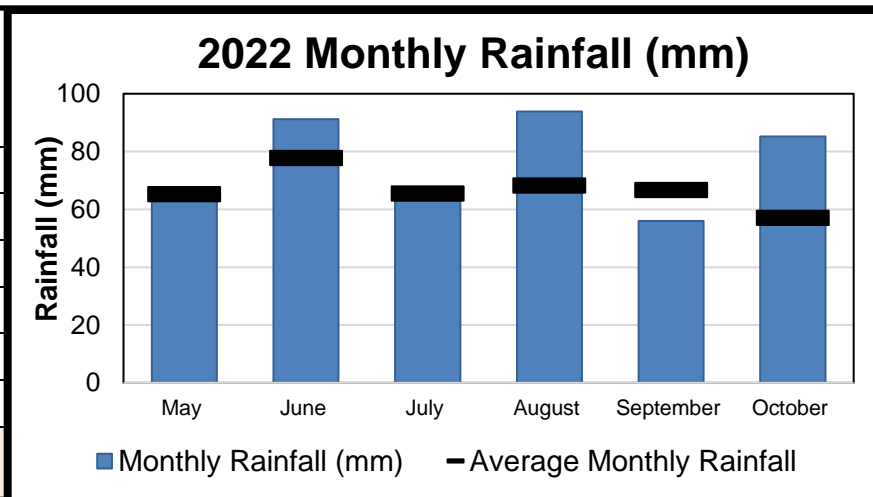
For more information about the Severn Sound Environmental Association visit www.severnsound.ca



2022 Daily Rainfall, Midland, Ontario



Month	Monthly Rainfall (mm)
May	66
June	91
July	63
August	94
September	56
October	85
Total	314



Rainfall amounts were based on continuous measurements recorded at the Midland, Ontario, Water and Wastewater Operations Facility, using a weather station equipped with a tipping bucket rain gauge. Data from May 1 to October 31, 2022 was used to compile the results.

For more information about the Severn Sound Environmental Association visit www.severnsound.ca

