



Huronia Community Foundation
La Fondation Communautaire de la Huronie



Purpose

1. Familiarize SSEA with Community Foundation model.
2. Information on options for charitable structures.
3. Possibility of further collaboration.



Giving To Your Community Foundation

Your local Community Foundation is a charitable non-profit organization that contributes time, leadership and financial support to initiatives that benefit your community most.

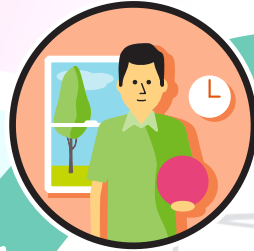


COMMUNITY
FOUNDATIONS
OF CANADA

FONDACTIONS
COMMUNAUTAIRES
DU CANADA

1 DONOR

Anyone can be a donor and contribute a gift, small or large, to a Community Foundation.



2 DONOR ENGAGEMENT

Community Foundations and donors work together to realize their philanthropic goals, matching their interests and community needs.



6 COMMUNITY IMPACT

The Community Foundation invests in many ways – grants, building partnerships and pooling knowledge, resources and expertise to stimulate ideas and strengthen community.



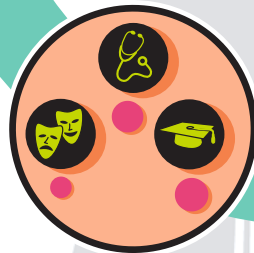
3 MAKE A CONTRIBUTION

Community Foundations work with the donor to establish a new endowment fund or give to an existing fund.



5 GRANTS

Community Foundations distribute grants to all corners of the community in arts and culture, education, health, social services and the environment.



4 INVESTMENT

The donor's gift is pooled with a Community Foundation's endowed assets, invested through careful stewardship and income is used to make grants.



Why Contribute to a Community Foundation?



Community Knowledge

A deep understanding of local needs and opportunities.



Expertise

Community Foundations are credible stewards of assets with granting expertise.



Leadership

Community Foundations are led by a volunteer board of directors comprised of knowledgeable community leaders.

Community Foundations of Canada

1921

First Canadian community foundation was established in Winnipeg, Manitoba

2001

Huron Community Foundation was established

today

More than 191 community foundations across Canada

Community Foundations of Canada

90%

Canadian communities with access to a Community Foundation

\$5.1
billion

Assets in Community Foundations across Canada

Huron Community Foundation

- \$3.2 million in assets (December 2018)
- Steward almost 80 funds



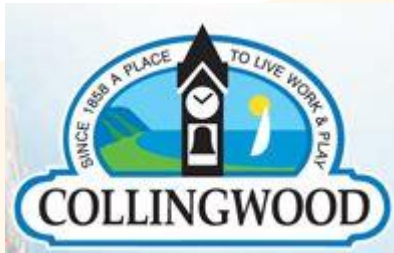
Wye Marsh

- Since 2001, **\$3.5m** in grants and scholarships to individuals and organizations



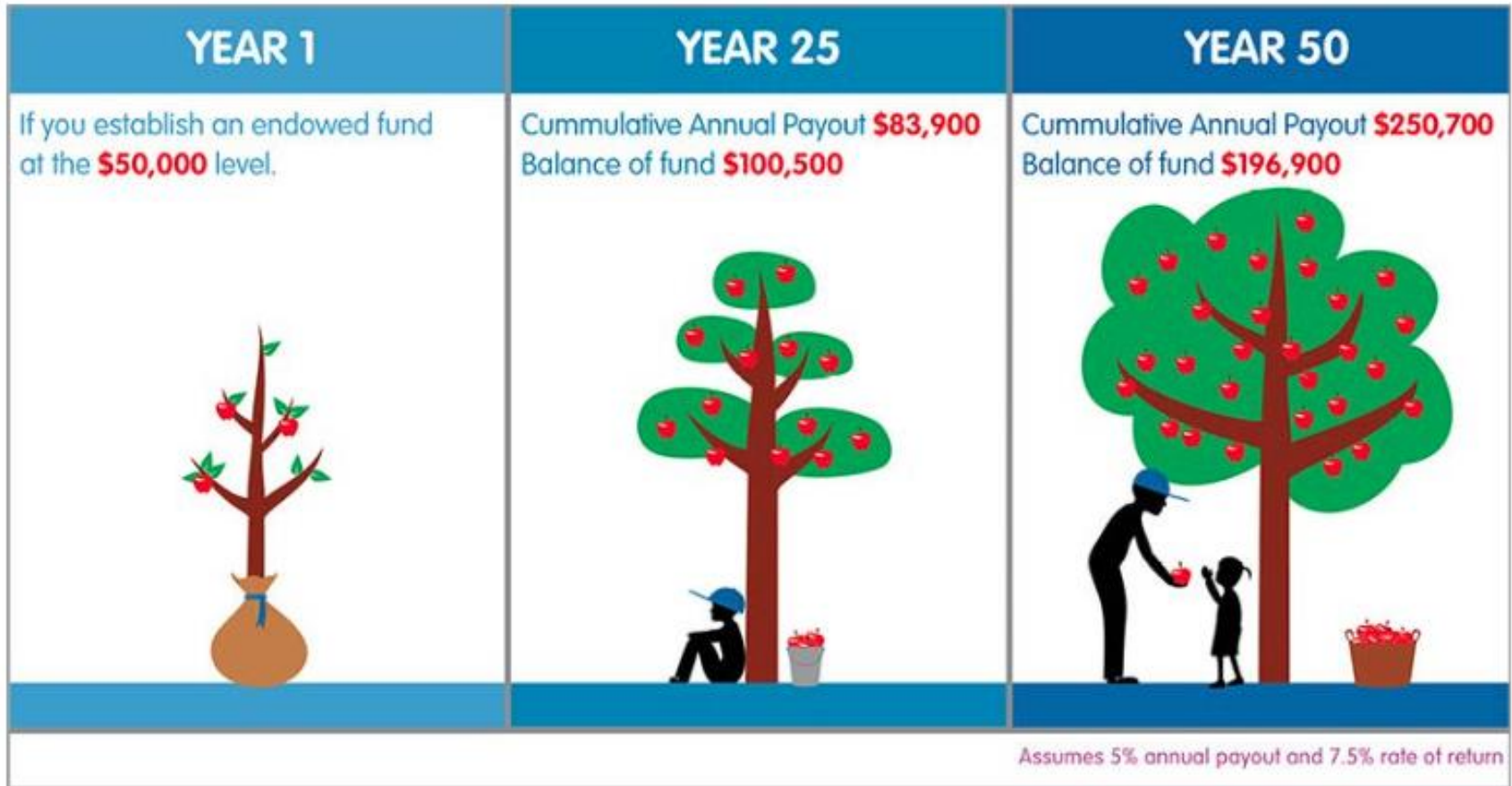
Hurononia Community Foundation

La Fondation Communautaire de la Huronie



HCF MISSION: Building financial legacies to support and sustain our Southern Georgian Bay communities **forever.**

How endowed giving works



HCF Stewardship

HCF stewards charitable activities focused on local needs through:

SMART AND CARING FUNDS – Discretionary grants targeting critical community needs.

SCHOLARSHIPS - Support for students from your region.

DONOR ADVISED ENDOWMENTS - Create a family or business giving strategy.

COMMUNITY ENDOWMENTS – Established by a municipality or local philanthropist targeting needs within a specific geography.

➤ Town of Penetanguishene Fund



HCF Stewardship

HCF stewards charitable activities focused on local needs through:



AGENCY ENDOWMENTS - Contribute to the sustainability of a local charity.

- YMCA Camp Kitchikewana
- Hospice Huronia

DESIGNATED FUNDS – Established to support a specific charity, organization or cause.

- Y's Men's Music Festival
- OSPCA

MANAGED FUNDS – Maximum flexibility and return. Incubator for new initiatives or organizations.

- Physicians Recruitment Fund
- Wye Marsh
- Chigamik



Where to from here?

- 1. Continue** – Maintain a connection and provide support as needed. i.e. Ongoing granting, 2014 Trillium Foundation Funding Management.
- 1. Establish Fund** – Set up an Agency, Designated or Managed Fund in order to incubate charitable activities.
- 2. Other** – Be available to advise and support SSEA.





HCF Board of Directors

President: Lorna Tomlinson
Vice President: Donald McCready
Secretary: Kathy Larkins
Treasurer: Braden Novakowski

Directors: Roberta Bald
Cathy Bissell
Julie Cayley
Karen Ferguson
Kendra Hallyburton
Marilyn Hughes
Kate Root
Michelle Shrives

Executive Director: Stephen Couchman

THANK YOU!

