

All sites

Monitoring of Plants: Regular site visits should be conducted during 2023 to monitor tree, shrub and wildflower health, survival, and assess watering needs. Both municipalities agreed to assist with the watering of plants if there is a prolonged drought or if the plants seem dry during SSEA's regular site visits.

Mulch: Loose mulch should be applied around smaller potted plants; the mulch will help retain moisture and suppress weeds.

Mulch mats: should be installed around trees and shrubs; the mats cover a large surface area and will retain water and suppress weed growth and competition around shrubs and trees.

Tools Required:

- Weed wrench: to remove large, tough woody invasive species (e.g., Glossy Buckthorn)
- Shovels: for digging holes for native trees and shrubs and larger potted plants with larger roots systems
- Trowels/hand shovels/hand-transplanters: for digging holes for planting small potted native wildflowers and plants
- Rakes: to assist with evenly spreading and lightly covering native seeds with soil, can be used for removal of some invasive species
- Gardening gloves: to protect hands of staff and volunteers during naturalization/enhancement activities

Suitable Tree Species:

Eastern White Cedar (*Thuja occidentalis*)

Red Pine (*Pinus resinosa*)

Eastern White Pine (*Pinus strobus*)

White Spruce (*Picea glauca*)

**Suitable Shrub and Wildflower Species:
Table 1 – Wet Sites**

Shrubs

Common Ninebark (*Physocarpus opulifolius*)
Nannyberry (*Viburnum lentago*)
Red osier dogwood (*Cornus sericea*)

Wildflowers

Blazing Star (*Liatris spicata*)
Blue Flag Iris (*Iris versicolor*)
Blue Vervain (*Verbena hastata*)
Boneset (*Eupatorium perfoliatum*)
Bottle Gentian (*Gentiana andrewsii*)
Cardinal Flower (*Lobelia cardinalis*)
Cup Plant (*Silphium perfoliatum*)
Cutleaf Coneflower (*Rudbeckia laciniata*)
Giant Sunflower (*Helianthus giganteus*)
Grass Leaved Goldenrod (*Rudbeckia laciniata*)
Great Blue Lobelia (*Lobelia siphilitica*)
New England Aster (*Symphyotrichum novae-angliae*)
Obedient Plant (*Physostegia virginiana*)
Ox-eye Sunflower (*Heliopsis helianthoides*)
Philadelphia Fleabane (*Erigeron philadelphicus*)
Pokeweed (*Phytolacca americana*)
Prairie Ironweed (*Vernonia fasciculata*)
Purple Stemmed Aster (*Symphyotrichum puniceum*)
Shallow Sedge (*Carex lurida*)
Smooth Blue Aster (*Symphyotrichum laeve*)
Sneezeweed (*Helenium autumnale*)
Spotted Joe Pye Weed (*Eutrochium maculatum*)
Stiff Goldenrod (*Solidago rigida*)
Swamp Milkweed (*Asclepias incarnata*)
Tall Ironweed (*Vernonia gigantea*)
Virginia Mountain Mint (*Pycnanthemum virginianum*)
Virginia Waterleaf (*Hydrophyllum virginianum*)
White Turtlehead (*Chelone glabra*)
Zigzag Goldenrod (*Solidago flexicaulis*)

Suitable Shrub and Wildflower Species:
Table 2 – Medium/Dry Sites

Shrubs

Arrowwood (*Viburnum dentatum*)
Bush honeysuckle (*Diervilla lonicera*)
Fragrant Sumac (*Rhus aromatica*)
Silky dogwood (*Cornus amomum*)

Wildflowers

Anise Hyssop (*Agastache foeniculum*)
Bee Balm (*Monarda didyma*)
Black eyed-Susan (*Rudbeckia hirta*)
Blue False Indigo (*Baptisia australis*)
Blue Stemmed Goldenrod (*Solidago caesia*)
Brown-eyed Susan (*Rudbeckia triloba*)
Butterfly Milkweed (*Asclepias tuberosa*)
Canada Anemone (*Anemone canadensis*)
Canada Goldenrod (*Solidago canadensis*)
Dotted Bee Balm (*Monarda punctata*)
Eastern Figwort (*Scrophularia marilandica*)
Evening Primrose (*Oenothera biennis*)
False Sunflower (*Heliopsis helianthoides*)
Flat Topped Aster (*Doellingeria umbellata*)
Foxglove Beardtongue (*Penstemon digitalis*)
Grass Leaved Goldenrod (*Euthamia graminifolia*)
Gray Headed Coneflower (*Ratibida pinnata*)
Hairy Beardtongue (*Penstemon hirsutus*)
Harebell (*Campanula rotundifolia*)
Heart Leaved Aster (*Symphyotrichum cordifolium*)
Heart Leaved Foamflower (*Tiarella cordifolia*)
Hoary Vervain (*Verbena stricta*)
Lance Leaved Coreopsis (*Coreopsis lanceolata*)
Leadplant (*Amorpha canescens*)
Ox-eye Sunflower (*Heliopsis helianthoides*)
Panicked Aster (*Symphyotrichum lanceolatum*)
Philadelphia Fleabane (*Erigeron philadelphicus*)
Purple Coneflower (*Echinacea purpurea*)
Red Columbine (*Aquilegia canadensis*)
Smooth Blue Aster (*Symphyotrichum laeve*)
Sundrops (*Oenothera fruticosa*)
Tall Coreopsis (*Coreopsis tripteris*)
Thimbleweed (*Anemone virginiana*)
Upland White Goldenrod (*Solidago ptarmicoides*)
White False Indigo (*Pycnanthemum virginianum*)
Wild Bergamot (*Monarda fistulosa*)
Wild Chives (*Allium schoenoprasum*)

Therrien Park – Town of Penetanguishene

This site will accommodate tree, shrub, wildflower planting, wildflower/grass seeding and no-mow areas.

Approximate area to naturalize/enhance: 3,000 m².

Trees: 200 bare-root trees to be planted at this site.

Shrubs: 50 bare-root red osier dogwood to be planted at this site. Additional potted stock shrubs from Table 1 list will be planted; quantities and species to be finalized based on budget and availability/ quotes from suppliers.

Wildflowers: Potted stock of wildflowers to be planted at this site. The species will be selected from Table 1 which includes wildflower species that are more suitable for wetter soils; quantities and species to be finalized based on budget and availability/quotes from suppliers.

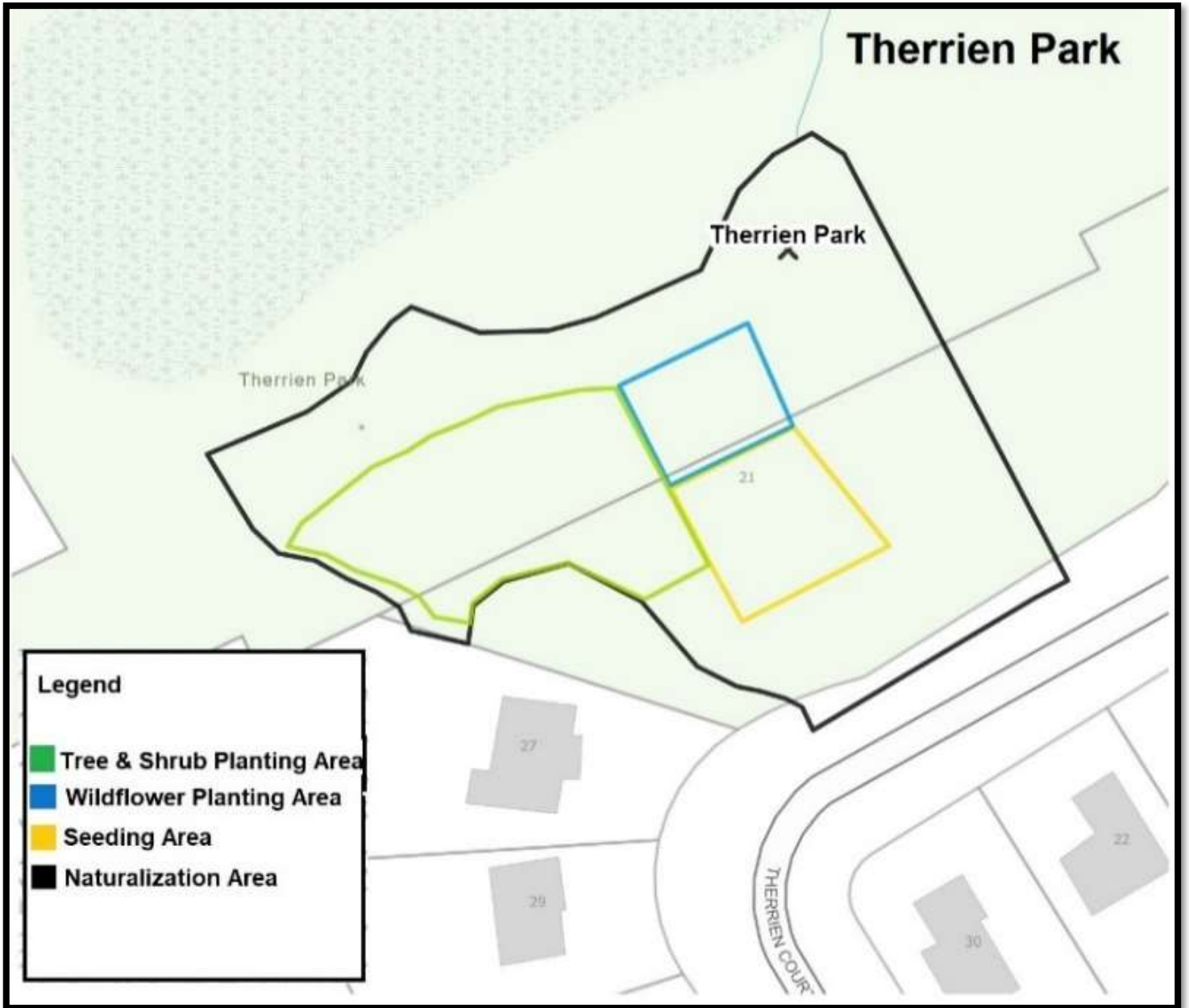
Seeding: Native wildflowers and grasses to be seeded at this site, seed mix to be selected based on suitability for wetter soils.

Invasive Species: Based on pre-naturalization site conditions, there are 13 invasive species that should be managed. Some woody plants, including Manitoba Maple, will require a weed wrench to remove. ****Note:** management of invasive species will require a multi-year effort.

Invasive species to manage:

Lesser Periwinkle
Common Reed
Garlic Mustard
Manitoba Maple
Lily of the Valley
Black Locust
Japanese Knotweed
Daylily
Creeping Jenny
Goutweed
Nettle Spp
Scots Pine
Spotted Dead-nettle

Volunteers/Staff: Approximately 50 volunteers/participants needed to assist with naturalization/enhancements activities at this location.



JT Payette Memorial Park – Town of Penetanguishene

This site is used as a stormwater retention area. The entire stormwater retention area will be naturalized as a no-mow zone; the planting areas will be confined to one side of the park, to allow for future access for stormwater management maintenance purposes, if needed.

Approximate area to naturalize/enhance: 10,000 m².

Trees: The municipality requested no trees be planted at this location, in case future equipment access is required for stormwater management purposes.

Shrubs: 75 bare-root red osier dogwood to be planted at this site. Additional potted stock shrubs from Table 1 list will be planted; quantities and species to be finalized based on budget and availability/ quotes from suppliers.

Wildflowers: Potted stock of wildflowers to be planted at this site. The species will be selected from Table 1 which includes wildflower species that are more suitable for wetter soils; quantities and species to be finalized based on budget and availability/quotes from suppliers.

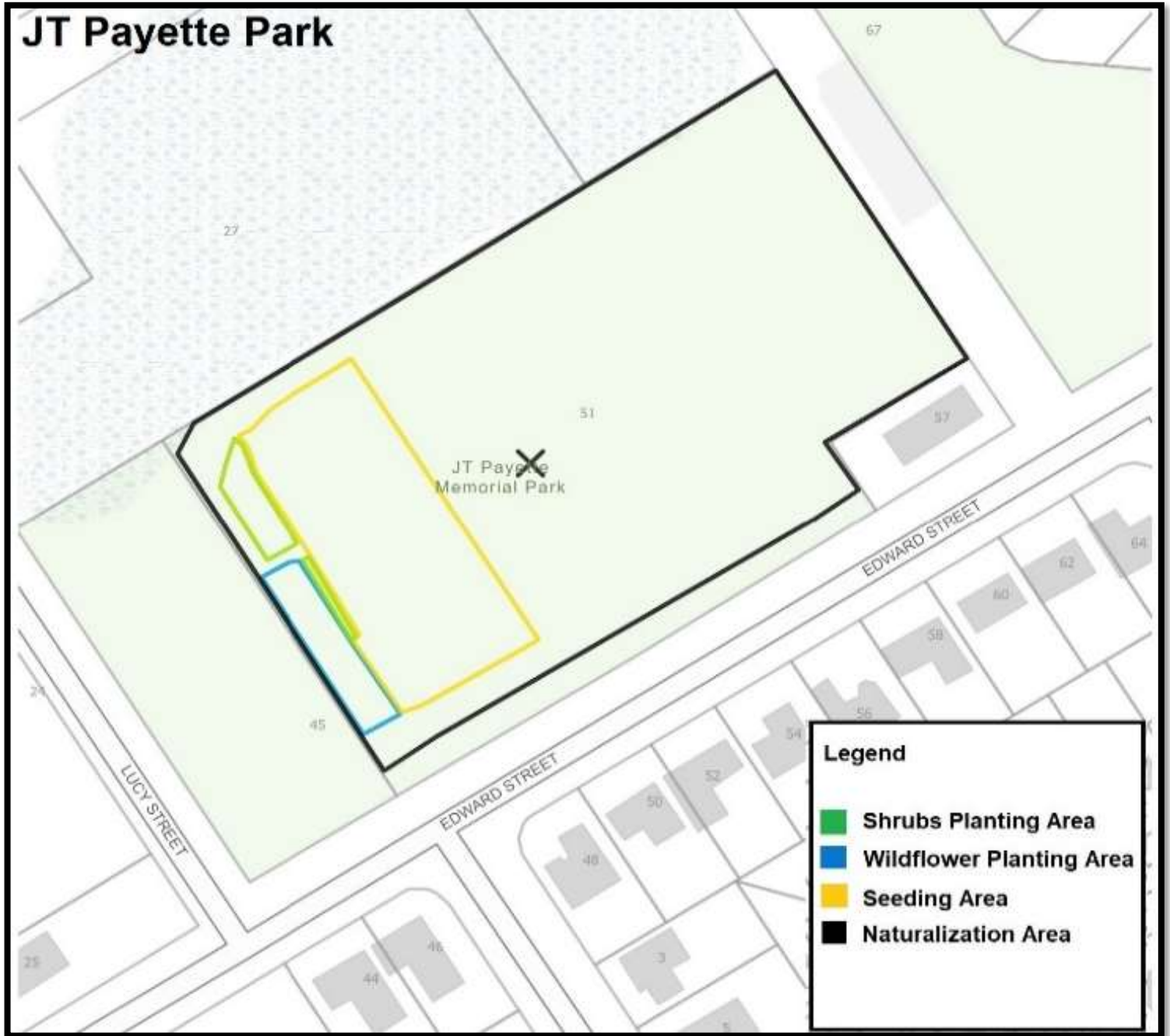
Seeding: Native wildflowers and grasses to be seeded at this site, seed mix to be selected based on suitability for wetter soils.

Invasive Species: Based on pre-naturalization site conditions, there are nine invasive species that should be managed. Some woody plants, including Glossy Buckthorn will require a weed wrench to remove. ****Note:** management of invasive species will require a multi-year effort.

Invasive species to manage:

Coltsfoot
Honeysuckle
Canada Thistle
Garlic Mustard
Glossy Buckthorn
Curly-leaf Burdock
English Ivy
Periwinkle
Common Burdock

Volunteers/Staff: Approximately 20 volunteers/participants needed to assist with naturalization/enhancements activities at this location.



Edgehill Park – Town of Midland

The site will accommodate shrub, wildflower planting, wildflower/grass seeding and no-mow areas.

Approximate area to naturalize/enhance: 5,000 m².

Trees: The municipality requested no trees be planted at this location, in order to maintain scenic views of Midland Bay.

Shrubs: 75 bare-root red osier dogwood to be planted at this site. Additional potted stock shrubs from Table 2 list will be planted; quantities and species to be finalized based on budget and availability/ quotes from suppliers.

Wildflowers: Potted stock of wildflowers to be planted at this site. The species will be selected from Table 2 which includes wildflower species that are more suitable for medium-to-dry soils; quantities and species to be finalized based on budget and availability/quotes from suppliers.

Seeding: Native wildflowers and grasses to be seeded at this site, seed mix to be selected based on suitability for medium-to-dry soils.

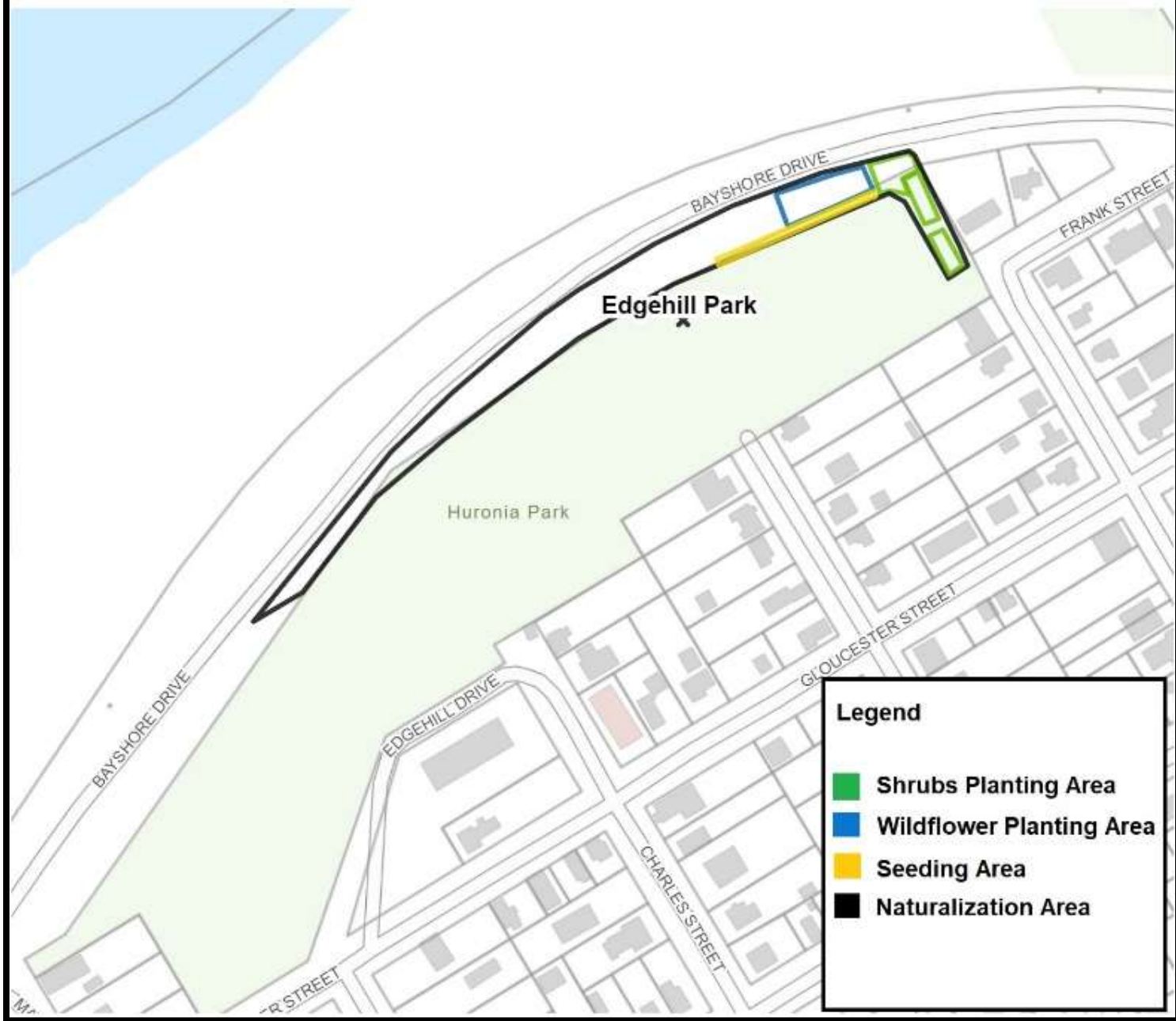
Invasive Species: Based on pre-naturalization site conditions, there are eight invasive species that should be managed. Some woody plants, including Manitoba Maple, will require a weed wrench to remove. ****Note:** management of invasive species will require a multi-year effort.

Invasive species to manage:

Purple Violet Spp
Black Locust
Daylily
Honeysuckle
Japanese Barberry
Manitoba Maple
Curly-leaf Burdock
Garlic Mustard

Volunteers/Staff: Approximately 10 volunteers/participants needed to assist with naturalization/enhancements activities at this location.

Edgehill Park



Ernest T. Bates Memorial Park – Town of Midland

This site will accommodate tree, shrub, wildflower planting, wildflower/grass seeding and no-mow areas.

Approximate area to naturalize/enhance: 1,000 m².

Trees: 140 bare-root trees to be planted at this site

Shrubs: Potted stock shrubs from Table 2 list will be planted; quantities and species to be finalized based on budget and availability/ quotes from suppliers.

Wildflowers: Potted stock of wildflowers to be planted at this site. The species will be selected from Table 2 which includes wildflower species that are more suitable for medium-to-dry soils; quantities and species to be finalized based on budget and availability/quotes from suppliers.

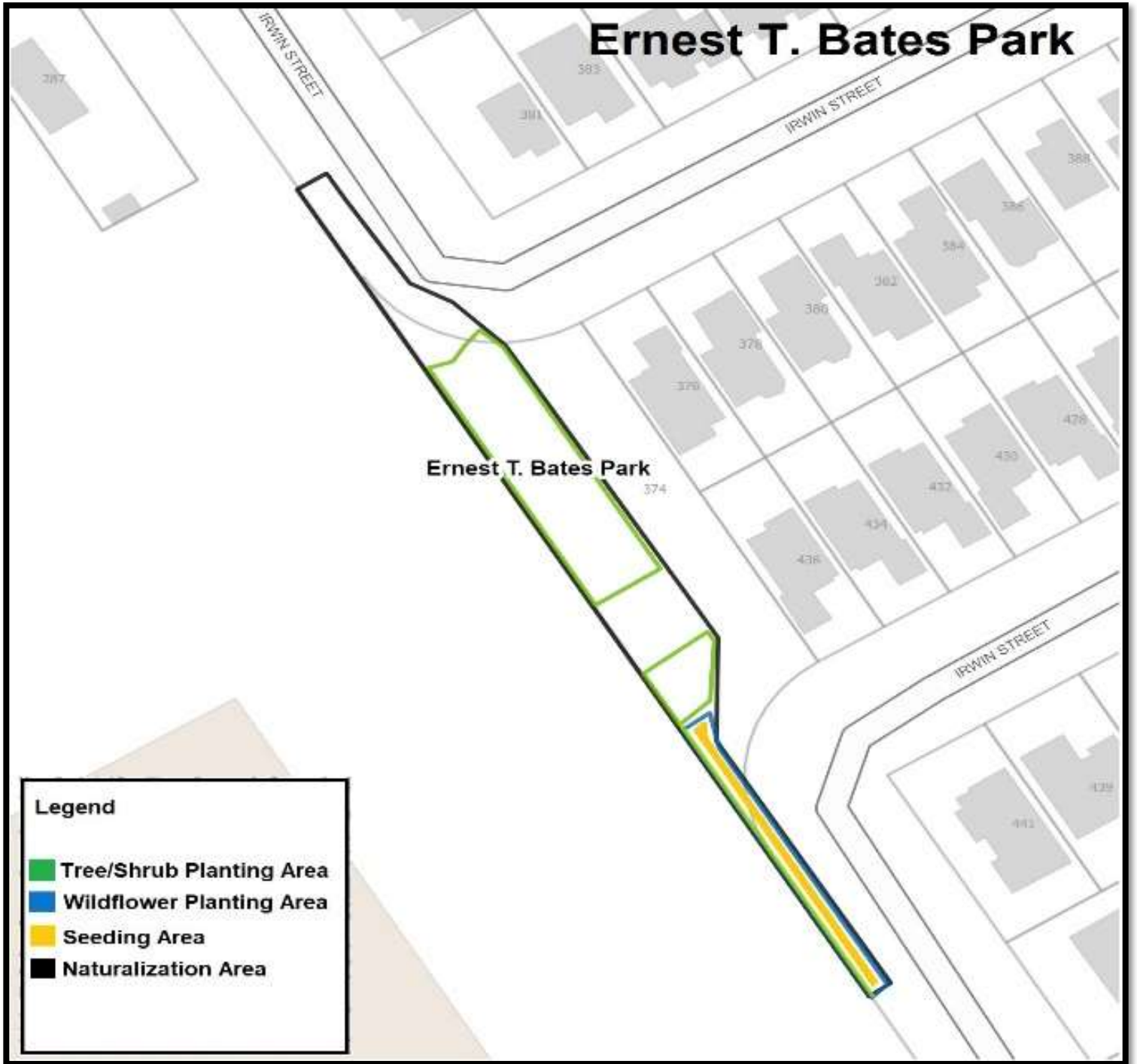
Seeding: Native wildflowers and grasses to be seeded at this site, seed mix to be selected based on suitability for medium-to-dry soils.

Invasive Species: Based on pre-naturalization site conditions, there are four invasive species that should be managed. Some woody plants, including Manitoba Maples and Glossy Buckthorn, will require a weed wrench to remove. ****Note:** management of invasive species will require a multi-year effort.

Invasive species to manage:

Curlyleaf burdock
Daylily
Glossy buckthorn
Manitoba Maple

Volunteers/Staff: Approximately 30 volunteers/participants needed to assist with naturalization/enhancements activities at this location.



Little Lake Park – Town of Midland

This park has two sites: Campbell's Hill will accommodate wildflower planting, wildflower/grass seeding and no-mow areas; the Boat Launch site will accommodate shrubs, wildflower planting, wildflower/grass seeding and no-mow areas.

Approximate area to naturalize/enhance: 4,000 m².

Trees: No additional trees to be planted on Campbell Hill at the request of the municipality; mature trees already established where they are desired in this location. No trees to be planted at the Boat Launch site at the request of the municipality.

Shrubs: Potted stock shrubs from Table 2 list will be planted at the Boat Launch site; quantities and species to be finalized based on budget and availability/ quotes from suppliers. No shrubs to be planted at the Campbell's Hill site at the request of the municipality.

Wildflowers: Potted stock of wildflowers to be planted at this site. The species will be selected from Table 2 which includes wildflower species that are more suitable for medium-to-dry soils; quantities and species to be finalized based on budget and availability/quotes from suppliers.

Seeding: Native wildflowers and grasses to be seeded at this site, seed mix to be selected based on suitability for medium-to-dry soils.

Invasive Species: Based on pre-naturalization site conditions, there are six invasive species that should be managed. Some woody plants, including Glossy Buckthorn will require a weed wrench to remove. ****Note:** management of invasive species will require a multi-year effort.

Invasive species to manage:

Greater Celandine
Common Reed
Glossy Buckthorn
Garlic Mustard
Daylily
Scots Pine

Volunteers/Staff: Approximately 10 volunteers/participants needed to assist with naturalization/enhancements activities at this location.



Little Lake Park - Boat Launch

Little Lake Park
^

Shrubs

Legend

- Shrubs Planting Area
- Wildflower Planting Area
- Seeding Area
- Naturalization Area